

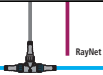
LAGOON SEVENTY 8

TRIM HELM

Axiom Pro 16
16" Multifunction Wifi hybridtouch display - Navionics Silver supplied



SeaTalkNG



p70Rs Colour
Autopilot
Control Head



Axiom Pro 16
16" Multifunction Wifi hybridtouch display - Navionics Silver supplied



RayNet

Wireless VHF
Handset

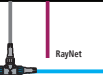


CHART TABLE

Axiom XL 16
16" Multifunction Wifi
touchscreen display



SeaTalkNG



RMK-10
Keypad



RayNet

Axiom XL 16
16" Multifunction Wifi
touchscreen display



RayNet

Ray 90 Radio VHF black box
with DSC



Wind Rotavecta and
ITC5 interface box



TECHNICAL AREA

DST810
Speed/
Depth/Temp
Transducer

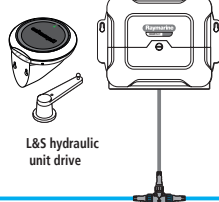


SeaTalkNG

RS150
GNSS antenna

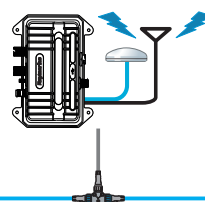


EV-1 9-axis compass sensor with
built-in rate gyro
ACU-400 actuator control unit
Rudder Reference



L&S hydraulic
unit drive

AIS700 class B AIS transceiver
with built-in antenna splitter.



Quantum 2 Doppler antenna using
CHIRP Pulse Compression
technology and Doppler collision
avoidance technology.



H55 Switch RayNet

RayNet

LAGOON SEVENTY 8 / OPTIONS

OPTIONNAL AUTOPILOT

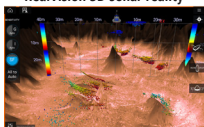
SmartController wireless
Remote control and
Repeater



SeaTalkNG

OPTIONNAL 3D SOUNDER

RV-200 bronze probe and RVX1000 sounder
black box to identify structures
and locate the fish with clarity identical to
RealVision 3D sonar reality



OPTIONNAL REALITY AUGMENTED

This function allows you to make
better decisions thanks to navigation
elements directly overlaid on the
video page of the Axiom + Displays.



AR200 compass

CAM220

RayNet

OPTIONNAL REAR CAM

CAM220 Dome IP Cameras



OPTIONNAL MFD CREW AREA

Axiom + 12
12" Multifunction WIFI touchscreen
display. Autopilot control integrated



SeaTalkNG

RayNet

OPTIONNAL THERMAL CAMERA

M332 Thermal camera
(320 x 256, 9Hz, FoV 24°)



RayNet