

**ELECTRONIC PACK**

**HELM**

**Axiom Pro 12**  
12" Multifunction Wifi hybridtouch display - Navionics Silver supplied



**Ray63 Radio VHF with DSC**



**i70s Colour instrument**



**p70s Colour Autopilot Control Head**



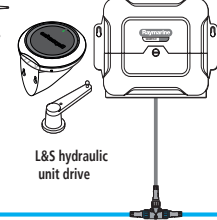
**DST810 Speed/Depth/Temp Transducer**



**Wind transducer and ITC5 interface box**



**EV-1 9-axis compass sensor with built-in rate gyro  
ACU-400 actuator control unit  
Rudder Reference**



L&S hydraulic unit drive

SeaTalkNG

RayNet

**OPTIONNAL VHF & AIS**

Ray 90 Radio VHF black box with DSC and A1700 Tranceiver **instead of Ray63 radio VHF from electronic pack**



SeaTalkNG

**OPTIONNAL VHF**

Wireless VHF Handset



**OPTIONNAL RADAR**

Quantum 2 Doppler antenna using CHIRP Pulse Compression technology and Doppler collision avoidance technology.



RayNet

**OPTIONNAL MFD**  
**CHART**

**Axiom + 12**  
12" Multifunction WIFI touchscreen display. Autopilot control integrated



RayNet

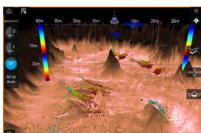
**OPTIONNAL AUTOPILOT**

S100 wireless Remote control



**OPTIONNAL 3D SOUNDER**

RV-200 bronze probe to identify structures and locate the fish with clarity identical to RealVision 3D sonar reality



SeaTalkNG